



## OFFICIAL

*This document is to assist in the identification of sporting firearms manufactured both by the Lithgow Small Arms Factory (Lithgow SAF) and Lithgow Arms. These firearms are recorded in the National Firearms Identification Database (NFID) and the corresponding NFID template numbers are listed in this document. The Australian Criminal Intelligence Commission acknowledges the assistance of staff at the [Lithgow Small Arms Factory Museum](#) in the production of this guide.*

## Introduction

The National Firearm Identification Database (NFID) recognises two manufacturers of 'Lithgow' firearms. The Lithgow SAF and Lithgow Arms. Each manufacturing facility is identified in NFID by the unique Australian Gun Code (AGC); the Lithgow SAF being 'LTG' and the Lithgow Arms being 'LTGA'. NFID data sheets are uploaded frequently at <https://www.acic.gov.au/our-services/firearms-services#accordion-3>

## Lithgow manufactured sporting rifles

The Australian Government owned Lithgow SAF commenced production of 22 Long Rifle (22LR) chambered rifles immediately after World War Two (WW2) in an effort to maintain employment of the skilled small-arms work-force who had produced military firearms before and during WW2. Included in this program was the conversion of Short, Magazine, Lee-Enfield (SMLE) No 1 MK III (and variations) military rifles to sporting configuration and chamberings.

## Thales Australia manufactured sporting rifles

Operating out of the historical Lithgow SAF facility in Lithgow, New South Wales, Thales Australia (Thales) in 2014 commenced the manufacture of both centre-fire and rim-fire sporting rifles under the name of Lithgow Arms.

### Lithgow SAF rim-fire sporting rifles

A total of 228,000 firearms comprising of three different models of single shot bolt-action 22LR chambered rifles were manufactured by Lithgow SAF from 1945 through to 1961.

**The Model 1** rifle was first manufactured by Lithgow SAF in 1945 through to late 1947. The rifle was a sole Lithgow SAF venture and was marketed throughout Australia (see Figure 26). Unlike the Model 1A and 1B the Model 1 has no markings which reference Slazenger Australia Pty Ltd. The barrel and receiver are manufactured from the same piece of ordnance steel. The serial number may be stamped on the barrel near the rear-sight, or under the stock, the latter requiring stock removal to view (see Table 3 for serial number information). Of the three single shot rifles manufactured by Lithgow SAF only the Model 1 has the trigger pinned to the stock. Figure 1 indicates the hole in the stock which accepts the trigger axis pin, while Figure 2 and Figure 3 indicate a comparison between the ways in which the trigger assembly is attached to the firearms. Those Lithgow SAF single shot rifles which have had the barrel shortened (thus removing the model markings) may be identified by model by the manner of the trigger attachment.

## OFFICIAL

## OFFICIAL

**Figure 1.** Lithgow SAF Model 1 trigger axis pin hole in stock



**Figure 2.** Lithgow SAF Model 1 (top) has the trigger attached to the stock whilst both the SAF Slazenger Model 1A and 1B (below) have the trigger assembly screwed to the barrel/receiver



## OFFICIAL

Lithgow manufactured sporting rifles

## OFFICIAL

**Figure 3.** SAF Slazenger Model 1A and 1B trigger assembly screwed to barrel/receiver



**Figure 4.** Lithgow SAF Model 1 markings



**The Model 1A** rifle commenced manufacture in 1947 after Lithgow SAF quoted then Sydney New South Wales (NSW) sporting goods distributors Slazenger Australia Pty Ltd for the initial production of 15,000 firearms. It is estimated that more than 58,000 Model 1A rifles were manufactured. The rifle is unique in that the barrel and receiver are manufactured from one piece of ordnance steel. The serial number is stamped on the barrel near the rear-sight (see Table 3 for serial number information). There is no separate receiver on a Lithgow SAF Model 1A rifle.

**Figure 5.** SAF (Slazenger) Model 1A markings



**The Model 1B** rifle was first produced in 1949 through to 1961 by the Lithgow SAF for Slazenger Australia Pty Ltd. This Model was an updated Model 1A. It is estimated that more than 104,000 rifles

## OFFICIAL

Lithgow manufactured sporting rifles

## OFFICIAL

were produced. The rifle is unique in that the barrel and receiver are manufactured from one piece of ordnance steel. There is no separate receiver on a SAF Model 1B rifle. The serial number is stamped on the barrel near the rear-sight (see Table 3 for serial number information).

**Figure 6.** SAF (Slazenger) Model 1B rifle



**The Model 12** 22LR bolt action repeating rifle was first manufactured by Lithgow SAF in 1947 through to circa 1956 for Slazenger Australia Pty. This rifle was fitted with either a five or ten round curved detachable box magazine. The five round magazines (see Figure 8) have no manufacturer's markings, whilst the ten round magazines have the Slazenger logo and the markings 'Bibby<sup>11</sup> Magazine'. The serial number is on the barrel near the rear-sight (see Table 3 for serial number information).

**Figure 7.** A Lithgow SAF manufactured ten round magazine for both the Slazenger 12 and 55



---

<sup>1</sup> Lionel Bibby was a small arms designer and consultant employed by Lithgow SAF.

## OFFICIAL

**OFFICIAL**

**Figure 8.** A Lithgow SAF manufactured five round magazine for both the Slazenger 12 and 55



**Figure 9.** Lithgow SAF Slazenger Model 12 markings



**Figure 10.** A SAF Slazenger Model 12 fitted with ten round magazine



**OFFICIAL**

## OFFICIAL

The Model 55 22LR bolt action repeating rifle was first manufactured by SAF in 1955 through to 1960 for Slazenger Australia Pty. The rifle can be fitted with either a five or ten round curved detachable box magazine. The Model 55 has a shorter barrel than the Model 12, with both the Model 12 and Model 55 using the same five or ten round magazine. The serial number is on the barrel near the rear-sight (see Table 3 for serial number information). In May 1958 the Lithgow SAF issued a safety alert for Model 55 rifles with serial numbers between numbers 1 through 3619 in relation to a trigger malfunction issue.

**Figure 11.** Lithgow SAF Slazenger Model 55 markings



**Figure 12.** Lithgow SAF Slazenger Model rifle with ten round magazine



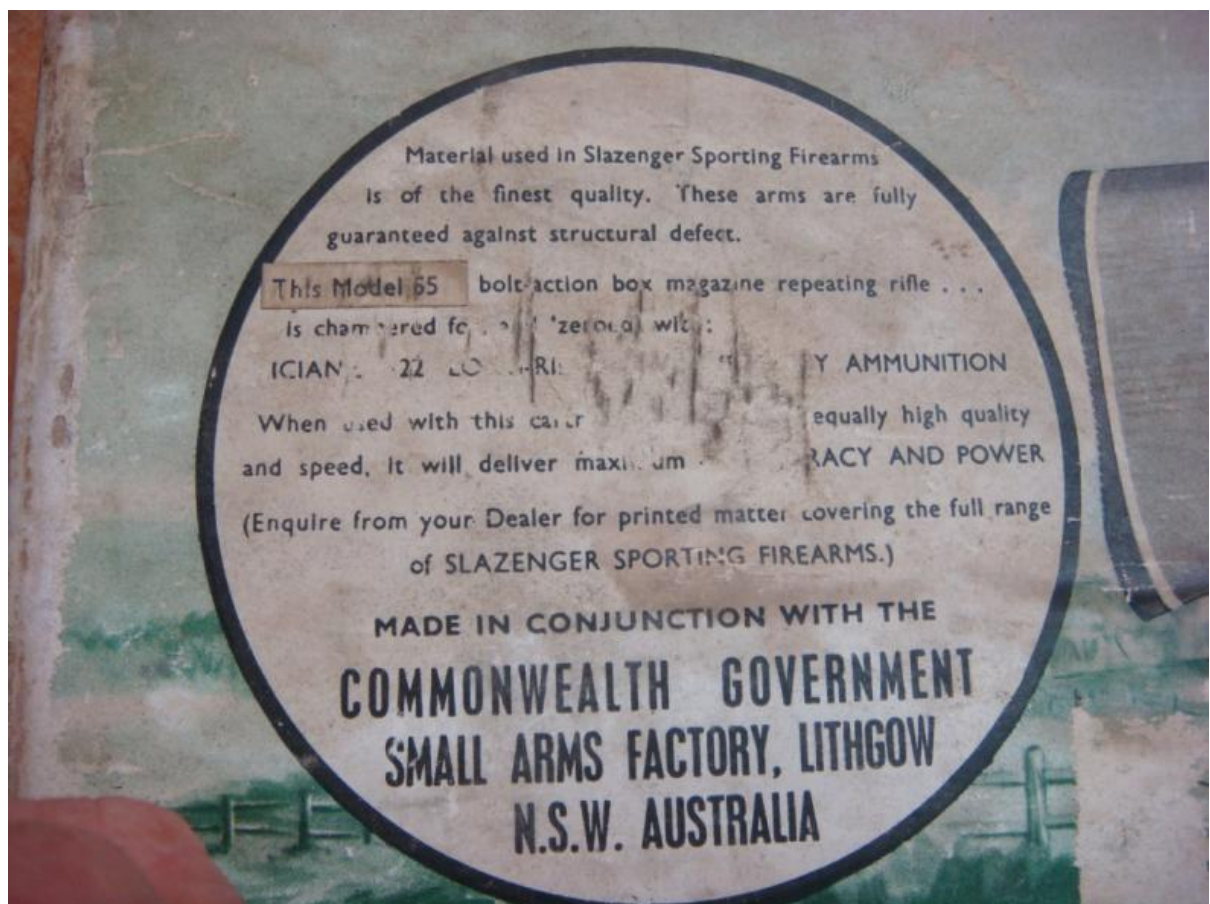
## OFFICIAL

## OFFICIAL

Figure 13. Lithgow SAF Slazenger Model 55 carton markings



Figure 14. SAF Slazenger 55 carton markings



## OFFICIAL

Lithgow manufactured sporting rifles

## OFFICIAL

Figure 15. SAF Slazenger 55 carton markings



## Lithgow Arms rim-fire sporting rifles

The **Model LA101** Crossover 22LR bolt action repeating rifle was first offered for sale in 2014 by Thales under the name Lithgow Arms. This rifle is supplied with a five round curved detachable box magazine but will also accept both the five or ten round Czech Republic manufactured CZ-UB ZKM452 rifle magazine. The rifle is also manufactured in 17 HMR or 22 Magnum chamberings as currently advertised on the Lithgow Arms website. The serial number is located on the right-hand side forward receiver. (See Table 3 for serial number information).

Figure 16. Lithgow Arms Model LA101 Crossover rifle



## OFFICIAL

Lithgow manufactured sporting rifles

## OFFICIAL

Figure 17. Lithgow Arms LA101 Crossover receiver markings



Figure 18. Lithgow Arms LA101 Crossover five round polymer magazine



## Lithgow SAF centre-fire sporting firearms

The SAF Slazenger Model 24 (chambered for the 22 Hornet cartridge) bolt action repeating rifle was first offered for sale in 1949 and ceased in 1960. The rifles were not manufactured by SAF but were conversions of existing military 303 British cartridge SMLE No 1 MK III rifles to the then popular 22 Hornet cartridge. The markings on the firearm are '22 HORNET' on the receiver flat, have Slazenger 24 markings on the side of the barrel, and conversion serial number on top of the barrel.

## OFFICIAL

Lithgow manufactured sporting rifles

## OFFICIAL

Whilst SAF re-serialised these converted rifles, the new number was only placed on the barrel assembly, and left the original factory receiver in place. Firearms should be registered by the frame/receiver serial number, as barrel assemblies can be easily removed. If the barrel is removed from a Model 24 that has been registered by the barrel serial number this will leave the receiver without any reference to the serial number placed on the barrel. These, and all other firearms should always be registered by the serial number placed at manufacture on the frame/receiver.

The original Lithgow SAF markings on these converted SMLE No 1 MK III rifles (either the initial 'Lithgow in a Shield' 1912-1926 or the later 'Lithgow MA' 1926-1956 see Figure 23) or those applied by any other manufacturers of the 303 SMLE No 1 MK III rifle will still be observed. The rifle was fitted with a four-round curved detachable box magazine (see Table 3 for serial number information).

**Figure 19.** Lithgow SAF Model 24 dated 1941 conversion to 22 Hornet calibre



**Figure 20.** SAF Model 24 conversion to 22 Hornet calibre



## OFFICIAL

## OFFICIAL

**Figure 21.** Sample Model 24 rifle is a regular Lithgow SAF SMLE No 1 MK III dated 1941 which has the correct factory serial number C30197 for this year of production (C1–C99999)



**Figure 22.** SAF Model 24 magazine



## OFFICIAL

## OFFICIAL

**Figure 23.** Lithgow Model 24 indicating both styles of factory markings and year of manufacture



**The 410 conversion** from military 303 SMLE No 1 MK III rifles was first introduced in 1949 and conversions ceased in 1960. These converted firearms were sold as 410 Bore bolt action single shot shotguns. Like the Model 24 conversion, these firearms will carry the full range of both SAF and other manufacture markings, including '410 SHOT' on the receiver flat. They will also have Slazenger marking on the side of the barrel, and a conversion serial number on top of the barrel. Many Australian gunsmiths also converted 303 SMLE rifles to 410 Bore, so it is difficult to identify a genuine 'Lithgow' conversion. Like the Model 24, the firearm should always be registered by the manufacturer's name of the receiver and the serial number on the receiver, and not the barrel.

**The L1A1 Target rifle** is a single shot firearm chambered for the 7.62 NATO (308 Winchester) cartridge and was designed for use in rifle competition managed by the Australian National Rifle Association. Introduced in 1968 with only 134 rifles manufactured, there are documented examples of serial numbers indicating manufacturer through to 1972.

**Figure 24.** Lithgow SAF manufactured L1A1 Target rifle



## Lithgow Arms centre-fire sporting rifles

The Lithgow Arms (LTGA) model LA102 is a bolt action repeating centre-fire rifle fitted with a detachable box magazine and comes in various cosmetic variations. These variations refer to stock style and composition. All variations have the same markings on the receiver.

## OFFICIAL

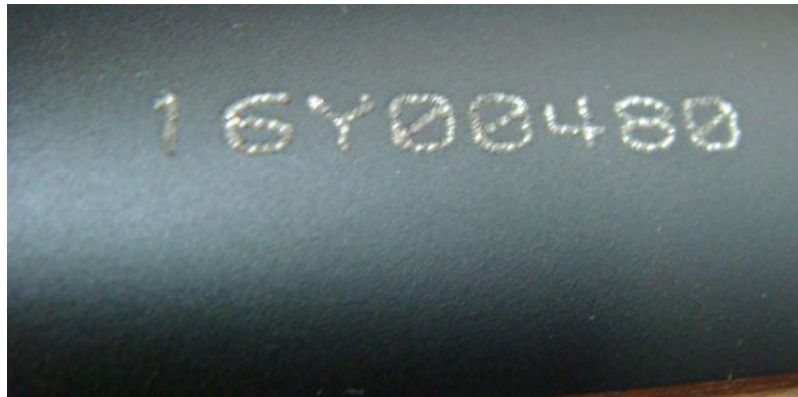
Lithgow manufactured sporting rifles

## OFFICIAL

Figure 25. Lithgow Arms Model LA102



Figure 26. Lithgow Arms Model LA102 serial number structure with 16Y prefix



### Recording descriptors of Lithgow SAF sporting rifles

Because both the Slazenger 12 and Slazenger 55 were serialized within their own range it is important that the model of each is recorded at time of registration or identification. The Model 24 and 410 may not have been converted on receivers made by SAF, so always record these rifles by the manufacturers name and serial number found on the receiver of the firearm. If possible also record the year (for Model 24 and 410) (see Figure 23) of manufacture with the model as this will assist the identification process.

### Recording Lithgow SAF model 1 serial number prefixes

The SAF Model 1 rifle has been observed with what appear to be numeric prefixes stamped before the serial number. The prefixes are isolated from the main body of the serial number by what is an obvious and clearly visible space (see Figure 27). Table 1 lists those prefixes observed to date by industry sources. Observing the known serial number range in Table 1 indicates that without the prefix being considered, the remaining numbers (1132–21199) fall within the known serial number range for the Model 1 rifle (1–77000). The full serial number, including prefix should be used to register the firearm, without replicating the space within the serial number.

## OFFICIAL

## OFFICIAL

**Table 1.** SAF Model 1 serial number prefixes

Model	Prefix	Serial Number Range
1	Z12 5	Z12 5 1 – Z12 5 500
1	16	16 500-16 1000
1	26	26 1132–26 1595
1	36	36 2869–36 3178
1	46	46 5110–46 6797
1	56	56 7030–56 9032
1	66	66 9750–66 12891
1	76	76 11524–76 17538
1	86	86 17841–86 21199

**Figure 27.** Lithgow SAF Model 1 serial number with 76 as a prefix



## OFFICIAL

Lithgow manufactured sporting rifles

Figure 28. Slazenger Australia advertising of Lithgow SAF made rifles and shotguns circa 1952

# Slazenger

## SPORTING RIFLES

Precision-built, bolt-action, box magazine repeating rifle, chambered for .22 Long-Rifle ammunition. Heavy 25" tapered barrel; patented white metal "bead" front sight and elevating sporting rear sight. Weight: approximately 6 lbs. Suitable for either field or target work.

**.22 REPEATER NOW WITH "10 SHOT MAGAZINE"**

10 Shot Magazines are also available separately.

**.22 SINGLE SHOT.** Bolt-action sporting rifle. 24" tapered barrel; square post front sight and elevating sporting rear sight. A lightweight, extremely accurate utility rifle.

**.22 HORNET.** Bolt-action; detachable box magazine designed to shoot .22 HORNET high velocity centre-fire cartridge. 25" heavy barrel; ramp front sight base and standard S.M.L.E. military-type rear sight graduated in yds. A super accurate sporting rifle at ranges up to 300 yards.

**.410 gauge SINGLE SHOTGUN.** 25" barrel fine-bored and full-choked to throw close, even patterns; chambered to handle all standard lengths of .410 gauge shotgun cartridge from 2" to 3".

Available from all regular Gunsmiths and Firearms Houses.  
Made in the Commonwealth Small Arms Factory, Lithgow, N.S.W., for SLAZENGERS (AUST.) PTY. LTD.

232 OUTDOORS AND FISHING August, 1952

## OFFICIAL

**Table 2.** Basic model descriptors

Make	Model	Type	Category	Calibre	NFID Template
Lithgow	1	Bolt single shot	A	22LR	F00004697
Lithgow	Slazenger 1A	Bolt single shot	A	22LR	F00004698
Lithgow	Slazenger 1B	Bolt single shot	A	22LR	F00004700
Lithgow	Slazenger 12	Bolt repeater	A	22LR	F00004699
Lithgow	Slazenger 55	Bolt repeater	A	22LR	F00004694
Lithgow	Slazenger 24	Bolt repeater	B	22 Hornet	F00014702
Lithgow	Slazenger 410	Bolt single shot	A	410 Bore	F00004718
Lithgow Arms	LA101	Bolt Repeater	A	22LR	F00016707
Lithgow Arms	LA102	Bolt Repeater	B	various	F00018397
Lithgow	L1A1 Target	Bolt single shot	B	7.62MM NATO	F00004710

## OFFICIAL

# OFFICIAL

**Table 3. Serial number (SN) guide**

Model	SN range	Notes	SN location
1*	1–64000 & 75001–77000	Two production runs	Barrel
1A	64001–75000 & 77001–124000	Two production runs	Barrel
1B	124000–228000		Barrel
12	1–82394 (known to date)	The Model 12 and 55 each had their own serial number range	Barrel
55	1–12702 (known to date)	The Model 12 and 55 each had their own serial number range	Barrel
5	1–3619	Model 55 Safety alert	Barrel
LA101	14Z00001-	The 14 represents year 2014	Receiver
LA101	15Z?????-	The 15 represents year 2015	Receiver
LA101	16Z?????-	The 16 represents year 2016	Receiver
LA102	16Y00001-	The 16 represents year 2016	Receiver
LA102	Y00001-	Post 2016 serial number structure	Receiver
24	Random – no sequence	Conversion from any SMLE 3 rifle Lithgow SAF	Receiver
410	Random – no sequence	Conversion from any SMLE 3 rifle Lithgow SAF	Receiver
L1A1 Target	1-134		Receiver

\*void of known numeric prefix

# OFFICIAL