

# NATIONAL WASTEWATER DRUG MONITORING PROGRAM

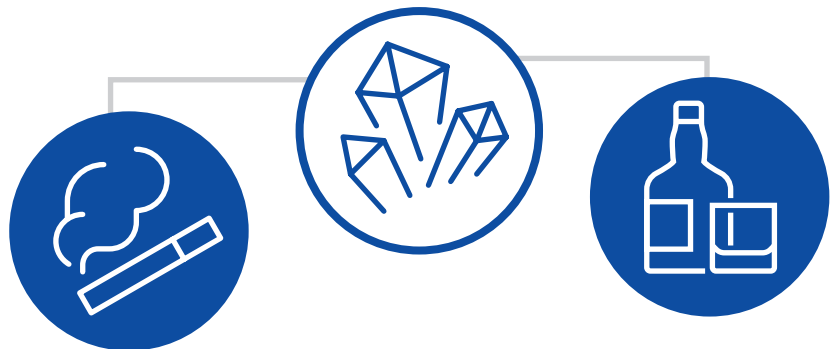


AUSTRALIAN  
CRIMINAL  
INTELLIGENCE  
COMMISSION

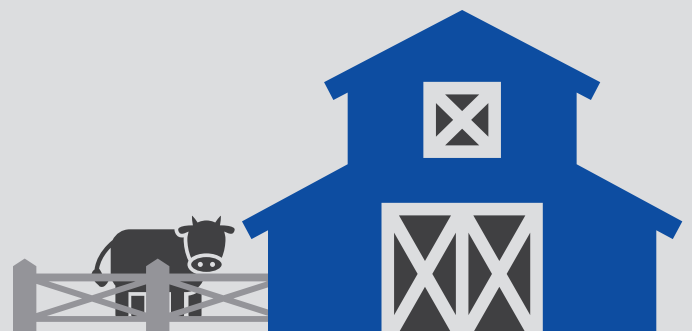


The December 2017 collection covers **54.3 per cent** of Australia's population—about **12.7 million** Australians.

**Alcohol** and **nicotine** remain the **highest consumed substances** and **methylamphetamine** continues to be the **most consumed illicit drug** tested.



Capital city **cocaine** and **heroin** average consumption exceeded regional consumption.



Regional **nicotine**, **methylamphetamine**, **MDA**, **oxycodone** and **fentanyl** average consumption exceeded capital city consumption.

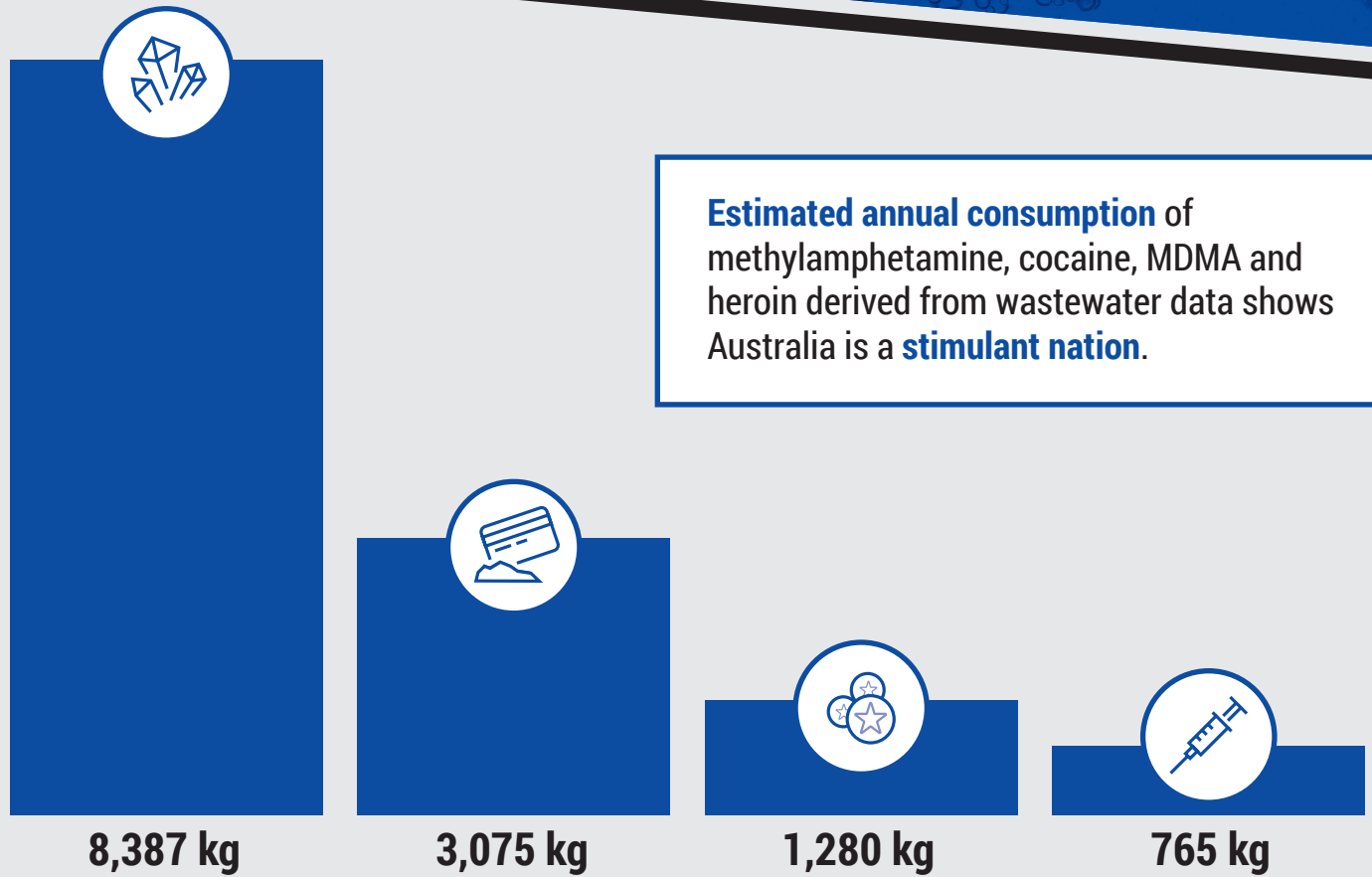


Use of new, sophisticated **geospatial analysis methods** incorporating water treatment catchment maps and **2016 Australian Census** mesh blocks gives more **accurate** and **precise consumption estimates**.

# NATIONAL WASTEWATER DRUG MONITORING PROGRAM



AUSTRALIAN  
CRIMINAL  
INTELLIGENCE  
COMMISSION



Estimated annual consumption of methylamphetamine, cocaine, MDMA and heroin derived from wastewater data shows Australia is a **stimulant nation**.

Based on wastewater consumption estimates, in 2016–17 Australian Federal Police seized:



Around a **quarter** of the **heroin** needed to meet national demand



Over **40 per cent** of the **methylamphetamine** needed to meet national demand



The **total weight** of **MDMA** needed to meet national demand



In **excess of the total weight** needed to meet national demand for **cocaine**